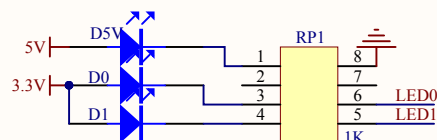


1

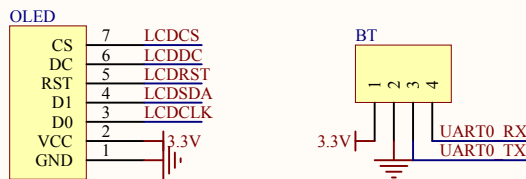
2

3

4

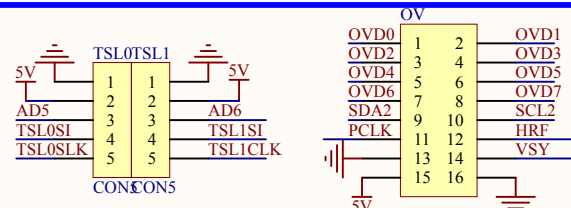


LED指示模块



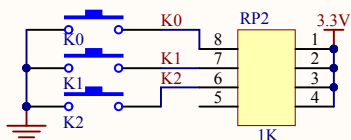
OLED接口

蓝牙接口

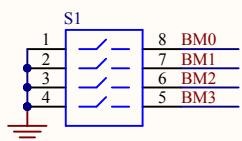


线阵CCD TSL1401接口

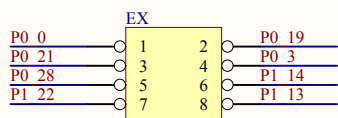
OV7620摄像头接口



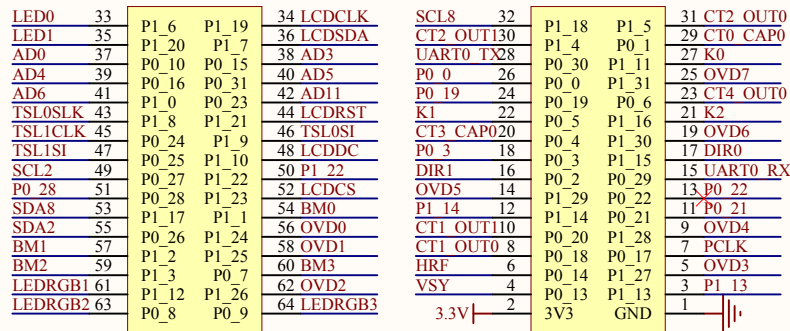
独立按键接口



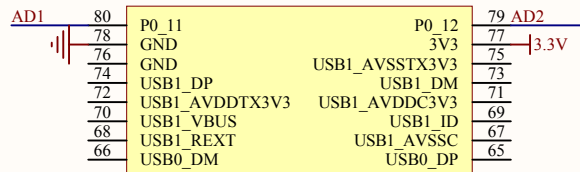
4位薄膜开关电路



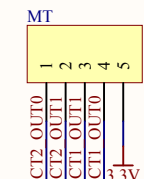
GPIO扩展电路



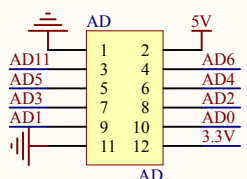
LQ_546xxP100_SYSVA



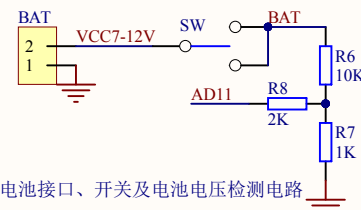
LQ_546P100SYSVA核心板插座



双路马达驱动即可



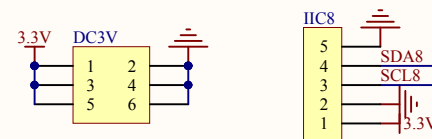
AD/电磁传感器接口电路



电池接口、开关及电池电压检测电路

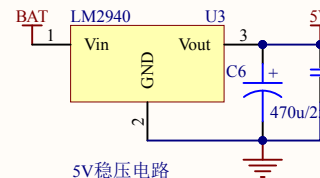


龙邱mini编码器接口电路

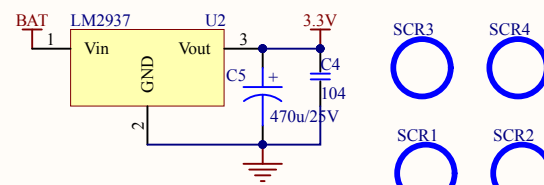


3.3V扩展电路

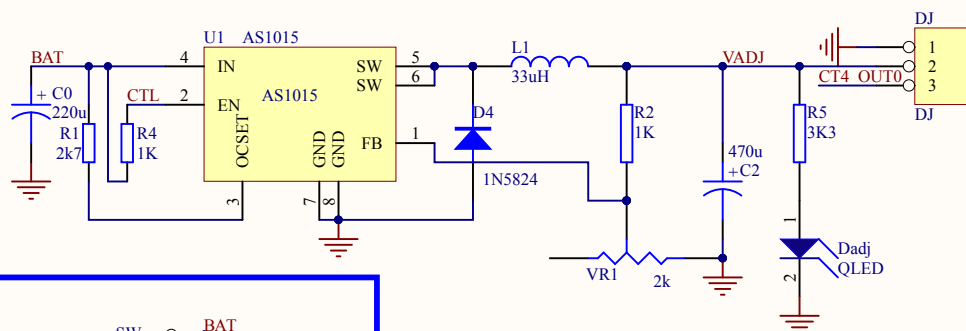
IIC接口



5V稳压电路



3.3V稳压电路



舵机可调稳压电路

Title			
北京龙邱智能科技546xxP100SYSVA通用母板VB原理图			
Size	Number	LONGQIU LOGO	Revision
A4			
Date:	2017-11-24	Sheet of	
File:	F:\Protel99se\LO_546P100SYSVA_MB\VB_Sch Doc		

1

2

3

4