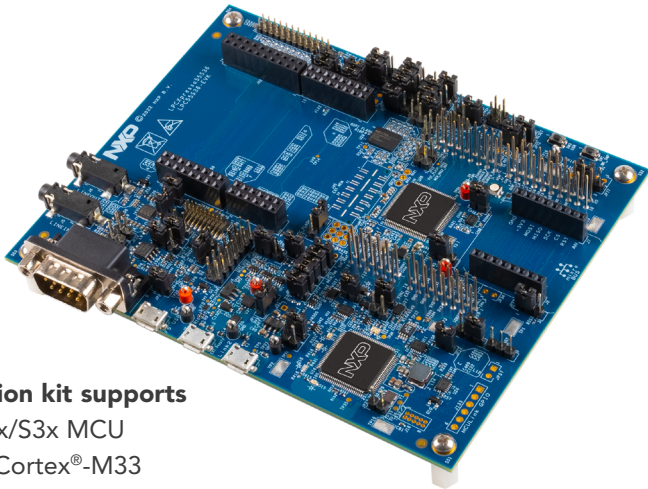




## QUICK START GUIDE

LPC55S36-EVK/LPC5536-EVK

# LPC55S36-EVK/LPC5536-EVK



### Evaluation kit supports

LPC553x/S3x MCU

Arm® / Cortex®-M33

150 MHz Arm® Cortex®-M33

Floating Point Unit (FPU) and Memory Protection Unit (MPU)

Up to 256 KB on-chip flash program memory

Up to 128 KB total SRAM

TrustZone® technology, Crypto Subsystem (CSS), Public Key Cryptography (PKC)  
among other security elements

# GET TO KNOW THE LPC55S36-EVK/LPC5536-EVK

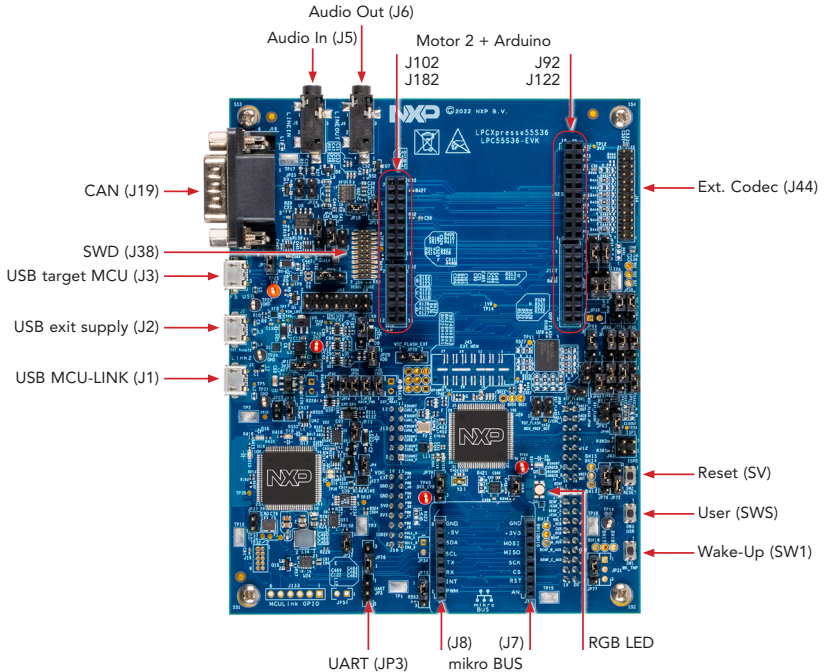


Figure 1: LPC55S36-EVK/LPC5536-EVK Callouts

## GET TO KNOW THE LPC55S36-EVK/LPC5536-EVK CONTINUED

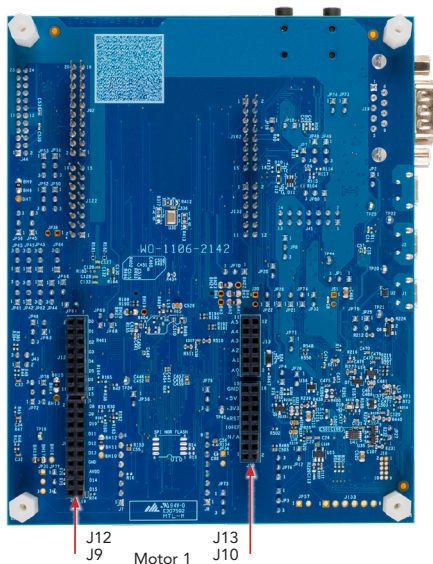
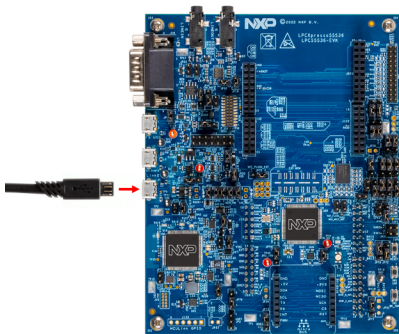


Figure 2: LPC55S36-EVK/LPC5536-EVK Pin-Out

## HOW TO GET STARTED

1. Connect the evaluation board to a PC using the included micro-USB cable to USB connector J1. When the board is powered up, LED D5 turns ON.
2. The LPC55S3x board comes preprogrammed with a demo that will blink each RGB LED three times. In addition, pressing SW1 will turn on the RED LED and pressing SW3 will turn on the GREEN LED. Connecting a micro-USB cable to J3 will enumerate a USB mouse device.
3. For more information on running the demo, access to additional examples and to download software and tools, please visit: [www.nxp.com/LPC55S3x/startnow](http://www.nxp.com/LPC55S3x/startnow).



## SUPPORT

Visit [www.nxp.com/support](http://www.nxp.com/support) for a list of phone numbers within your region.

## WARRANTY

Visit [www.nxp.com/warranty](http://www.nxp.com/warranty) for complete warranty information.



## GET STARTED

Download installation software and documentation at [www.nxp.com/LPC55S3x](http://www.nxp.com/LPC55S3x)

[www.nxp.com/LPC55S36-EVK](http://www.nxp.com/LPC55S36-EVK)

NXP and the NXP logo are trademarks of NXP B.V. All other product or service names are the property of their respective owners. © 2023 NXP B.V.

Document Number: LPC55S3x REV 1 Agile Number: 926-79042 REV B